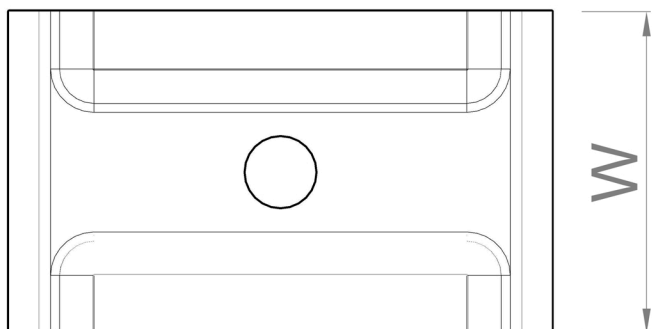


# Central plate for cable tray suspension SC 6-10

**Description:** Element for central suspension used mainly for the fixing of basket trays to ceiling using threaded rods. It shall always be used in pairs to guarantee an appropriate fixing to cable tray.

It can also be used fixing for the base in curves or T junctions.



Ref. Code	W (mm)	L (mm)	Metric (mm)	Thickness (mm)	Weight (Kg/unit)
SC6EZ	35	60	6	2	0.031
SC8EZ	35	60	8	2	0.031
SC10EZ	35	60	10	2	0.031

*NOTE: This product is not suitable for cable trays EC30.060; EC60.060; EC60.060-6W - nor any of its coating types.*

**Suffix Code**

**Description of Coating / Material**

- EZ** Electrolytic Zinc Plating + Passivation with trivalent Cr.  
Corrosion Resistance: Classified 2 according to IEC 61537.
- ZF** Dip-spinning Non-electrolytic Zinc Flake Coating.  
Corrosion Resistance: Classified 8 according to IEC 61537.
- IN** Austenitic Stainless Steel AISI 304 or AISI 316L.  
Corrosion Resistance: Classified 9D according to IEC 61537.

